

ICTHM 2023**International Conference in Technology, Humanities and Management****EXPLORING CORE CATALYSTS FOR ADVANCEMENT IN
DIGITAL SOCIAL INNOVATION: A DEMATEL ANALYSIS FOR
YOUNG ENTREPRENEURS**

Zahari Md Rodzi (a)*, Nur Aima Binti Shafie (b), Noorraha Binti Abdul Razak (c),
Nurshuhaida Binti Abdul Razak (c), Siti Arnizan Binti Mat Rifim (c)

*Corresponding author

(a) Kolej Pengajian Pengkomputeran, Informatik dan Matematik, Universiti Teknologi MARA Cawangan Negeri
Sembilan 70300, Seremban, Malaysia, zahari@uitm.edu.my

(b) Accounting Research Institute (ARI), Level 12, Menara Menara Sultan Abdul Aziz Shah (SAAS), Universiti
Teknologi MARA, 40450 Shah Alam, Selangor, Malaysia, aimashafie@uitm.edu.my

(c) Faculty of Business, Accountancy, and Social Sciences, Universiti Poly-Tech Malaysia, Malaysia,
noorraha@uptm.edu.my, nurshuhaida@uptm.edu.my, siti_arnizan@uptm.edu.my

Abstract

The Decision-Making Trial and Evaluation Laboratory (DEMATEL) technique is used in this study to identify and prioritize the elements driving company development in Digital Social Innovation (DSI) among young entrepreneurs. For data gathering, a multi-method approach comprising surveys and interviews was used. According to the DEMATEL research, "Innovation" and "Financial Resources" emerged as the primary causative variables driving corporate development. In contrast, characteristics such as "Networking," "Knowledge and Expertise," and "Digital Marketing" were found as system-wide consequences. These results provide important insights into the major factors that drive success and scalability in DSI businesses. The research not only identifies opportunities for focused strategic initiatives, but it also aids stakeholders and policymakers in allocating resources to build a sustainable, socially responsible economy. This study, in particular, intends to increase the launch and spread of DSI initiatives among young people, with implications for both theoretical understanding and practical application in creating a digitally-driven, socially innovative economy.

2357-1330 © 2023 Published by European Publisher.

Keywords: Digital Social Innovations, Young Entrepreneurs, Dematel

1. Introduction

Digital Social Innovation (DSI) has surfaced as a type of social innovation in Malaysia that utilises novel technologies to address social issues. As per the Malaysia Digital Economy Corporation (MDEC), there has been a surge in the inclination of youthful entrepreneurs towards DSI in recent years. The efficacy of DSI initiatives in Malaysia is contingent upon the ability of professionals to effectively involve users, citizens, and communities in their undertakings. Nonetheless, a dearth of scholarly inquiry exists regarding the principal determinants of commercial expansion in the domain of digital social innovation (DSI) among nascent businesspersons in Malaysia.

The prevalence of youthful entrepreneurship is increasing in Malaysia. The government has been proactively promoting and facilitating the expansion of small and medium-sized enterprises (SMEs), encompassing those spearheaded by youthful entrepreneurs. As per the Malaysia Youth Development Index Report of 2020, there has been a notable surge in the count of youthful entrepreneurs in Malaysia in the recent years. Notwithstanding the expansion, numerous youthful entrepreneurs encounter financial resources, expertise, and information availability obstacles.

This research aims to examine the primary factors that contribute to the expansion of businesses in the digital social innovation (DSI) sector, as observed among emerging entrepreneurs in Malaysia. To achieve this goal, the study employs the DEMATEL technique, a powerful analytical method used for various applications (Ismail, Al-sharqi, et al., 2023; Ismail, Rodzi, et al., 2023; Rodzi, Amin, et al., 2023; Rodzi, Hazri, et al., 2023) Table 1 displays the prior research on the pivotal factors that drive business expansion in digital social innovation among youthful entrepreneurs.

Table 1. Summary of previous research

Key drivers	Description and references
Y1: Digital marketing	Digital marketing involves the strategic use of digital channels to promote products and services, expand reach to a broader audience, establish brand identity, and evaluate the efficacy of marketing campaigns (Masrianto et al., 2022; Qian et al., 2022; Rizvanović et al., 2023; Setkute & Dibb, 2022).
Y2: Government policies	The implementation of government policies, such as tax incentives, grants, and training programs, can foster a conducive business environment that is supportive of young entrepreneurs (Nudurupati et al., 2022; Razmjoo et al., 2022; Simatupang & Widjaja, 2012).
Y3: Knowledge and expertise	Possessing essential skills, experience, and understanding of technology, social media, and data analytics is crucial for individuals to compete and innovate today. This knowledge and expertise are highly valued in various industries and can significantly contribute to professional success (Amouri et al., 2021; Andrade et al., 2022).
Y4: Financial resources	Financial resources are essential for investing in businesses, recruiting personnel, and expanding operations. These resources can be obtained through various means, such as crowdfunding, angel investing, and (Adomako & Ahsan, 2022; Edelman et al., 2016; Hewa Wellalage et al., 2021; Shaw & Sørensen, 2022).
Y5: Innovation	Innovation refers to the capacity to develop novel products, services, or business models that cater to the demands of customers in inventive ways, thereby securing a competitive (Cuntz & Peuckert, 2023; Polas et al., 2023; Williams et al., 2022; Zhao et al., 2023).
Y6: Networking	Networking involves establishing connections with entrepreneurs, mentors, investors, and industry experts to gain valuable insights, advice, and opportunities for collaboration and learning (Bijedić et al., 2023; Chapus & Nordman, 2021; Glinka et al., 2023).
Y7: Supportive ecosystem	The provision of education, mentorship, and infrastructure fosters a conducive ecosystem that cultivates innovation, collaboration, and entrepreneurship among young entrepreneurs (Catala et al., 2023; Gómez et al., 2023; Roundy & Burke-Smalley, 2022; Tiba et al., 2021).

2. Methodology

This study employs a mixed-method approach, comprising quantitative and qualitative research methods, as its methodology. The research will employ DEMATEL, a decision-making methodology, to ascertain the principal factors that contribute to the expansion of digital social innovation in the realm of young entrepreneurs in Malaysia. Furthermore, the collection of data on the experiences, challenges, and opportunities of young entrepreneurs engaged in digital social innovation projects will be facilitated through surveys and interviews. Figure 1 depicts the flowchart illustrating the research methodology.

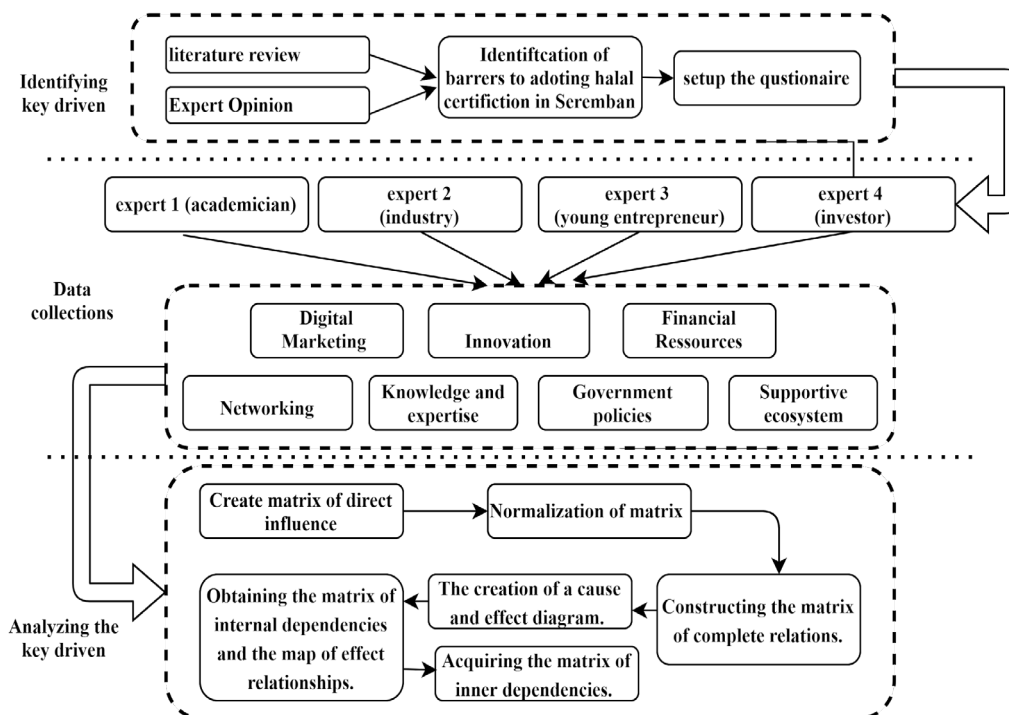


Figure 1. The flowchart of Methodology

2.1. Phase 1: Literature Review and Expert Opinions on Key Drivers

The initial stage of the methodology involves conducting a comprehensive review of relevant literature and gathering expert opinions on the primary factors that drive business growth in digital social innovation among young entrepreneurs, utilising the DEMATEL approach. The literature review will entail a comprehensive analysis of scholarly journal articles, industry reports, and books pertaining to digital social innovation and entrepreneurship. The present analysis aims to identify pivotal factors and recurring patterns that have surfaced in various studies. These findings will be utilised to formulate a preliminary set of crucial drivers. The consultation process will involve seeking insights from a minimum of two academic experts and one industry specialist to gain a comprehensive understanding of the key drivers that have been identified. To ensure the reliability and validity of the collected data, a structured methodology, such as a survey or semi-structured interview, will be employed.

2.2. Phase 2: Data Collection through Interviews with Experts

The second stage of the methodology involves the acquisition of data through comprehensive interviews with four specialists, consisting of a minimum of one youthful entrepreneur and one academician. The objective is to gather their viewpoints on the principal catalysts for business expansion in digital social innovation among youthful entrepreneurs. To ensure uniformity in the data gathered from all interviews, a semi-structured interview guide will be employed. The interviews are planned to be recorded and transcribed in an exact manner for the purpose of analysis. Four experts will be chosen to offer a varied array of viewpoints regarding the primary factors that drive business expansion in digital social innovation among youthful entrepreneurs.

2.3. Phase 3: Analyzing Data using DEMATEL

The third stage of the methodology involves the utilization of DEMATEL for data analysis. The DEMATEL methodology shall be employed to model intricate systems and ascertain the causal interdependencies among diverse constituents of the system. The qualitative data analysis approach, specifically thematic analysis, will be utilised to analyse the data gathered from the interviews. Subsequently, the DEMATEL method will be employed to apply the findings. The validity of the results will be ensured by a skilled analyst who will carry out the DEMATEL analysis. Visual aids, such as diagrams or graphs, will be utilised to enhance comprehension when presenting the outcomes of the DEMATEL analysis. The recommendations resulting from the DEMATEL analysis will be substantiated by the data obtained from the review of literature and the interviews conducted with experts.

The steps involved in the DEMATEL method are as follows:

2.3.1. Step 1. Creating the matrix of direct influence

This step involves establishing a link between the criteria. Data collected based on the linguistic term shown in table 2.

Table 2. Linguistic term

Linguistic Terms	Influence Score
Unrelated	1
Slightly Unrelated	2
Moderately Related	3
Related	4
Very Related	5

2.3.2. Step 2. Normalising of the matrix of direct influence

Formulas (1) and (2) are used to get the normalised direct-relation matrix A from matrix S .

$$S = s \times A \quad (1)$$

$$s = \min \left(\frac{1}{\max_{1 \leq i \leq n} \sum_{j=1}^n [a_{ij}]}, \frac{1}{\max_{1 \leq j \leq n} \sum_{i=1}^n [a_{ij}]} \right) i, j \in (1, 2, \dots, n) \quad (2)$$

2.3.3. Step 3. Constructing the matrix of complete relations

After normalising the direct-relation matrix S , the total-relation matrix M is computed using the formula (3), where I denote the Identity Matrix:

$$M = S(I - S)^{-1} \quad (3)$$

2.4. Step 4. The development of a cause-and-effect diagram

The utilisation of $C + R$ and $R - C$ is demonstrated in formulae (4) for matrix S , where R represents the sum of columns and C represents the sum of rows. (6). Criteria that exhibit positive $R - C$ values exert a stronger influence on the remaining criteria. The term "dispatchers" is commonly used to refer to these individuals. Individuals with lower $R - C$ levels tend to be more susceptible to external influences. The entities are commonly denoted as "receivers." Conversely, the summation of R and C denotes the extent of correlation between one criterion and the rest.

$$M = [m_{ij}]_{n \times n}, i, j \in (1, 2, \dots, n) \quad (4)$$

$$R_i = \sum_{j=1}^n [m_{ij}] \quad (5)$$

$$C_i = \sum_{i=1}^n [m_{ij}] \quad (6)$$

2.4.1. Step 5. Obtaining the matrix of internal dependencies and the map of effect relationships

The dataset was mapped utilising the $(R + C, R - C)$. The parameter known as the threshold value is employed to denote the degree of influence present between a set of criteria.

3. Findings

This section presents the results of a research study that aimed to identify the primary factors that drive business growth in digital social innovation among young entrepreneurs.

Table 3. The result of DEMATEL

	Ri	Ci	Ri + Ci	Ri - Ci	Identify	Ranking
Y1: Digital marketing	5.0018	5.9620	10.9638	-0.9602	Effect	5
Y2: Government policies	5.1641	5.3354	10.4994	-0.1713	Effect	6
Y3: Knowledge anexpertise	5.6195	5.6550	11.2746	-0.0355	Effect	4
Y4: Financial resources	6.5250	5.2343	11.7593	1.2907	Cause	2
Y5: Innovation	6.2346	5.9584	12.1931	0.2762	Cause	1
Y6: Networking	5.4780	6.0748	11.5528	-0.5968	Effect	3
Y7:Supportive ecosystem	5.2836	5.0868	10.3704	0.1968	Cause	7

The presented Table 3 demonstrates the results of a DEMATEL analysis that was conducted as a component of the research focused on the expansion of businesses in the realm of digital social innovation, specifically among young entrepreneurs. The column labeled "Ri" denotes the total for each

row, indicating the cumulative sum of values across all factors. The column labeled "Ci" denotes the total for each factor across all rows. The column labeled " $R_i + C_i$ " displays the cumulative impact obtained by adding the total of each row and each column for every factor. Conversely, the column labeled " $R_i - C_i$ " denotes the disparity between each row's total and each column's total for every factor.

The column labeled "Identify" classifies the factors into two categories, namely causes and effects. The presence of certain factors, categorized as "causal," exerts a notable and favorable impact on the growth of businesses engaged in digital social innovation, particularly among young entrepreneurs. Conversely, factors classified as "consequential" are subject to influence from other factors within the system. The ranking of influential factors driving business growth in digital social innovation is of utmost importance. Based on the analysis conducted, it is evident that the factor of "Innovation" (Y5) holds the highest rank, with a value of 12.1931. This factor is recognized as a causal factor, signifying its significant contribution in facilitating business growth within this particular field. According to the findings, the variable "Financial resources" (Y4) holds the second position in terms of ranking, with a value of 11.7593. This variable is also recognized as a contributing factor, highlighting the significance of young entrepreneurs' ability to obtain financial capital for achieving success. The analysis further demonstrates that the variable labeled as "Networking" (Y6) holds the third position in terms of ranking, with a numerical value of 11.5528. This variable is classified as an effect, indicating that it is subject to the influence of other factors within the system. In a similar vein, the variable labeled as "Knowledge and expertise" (Y3) holds the fourth position in the ranking, with a numerical value of 11.2746. Additionally, the variable denoted as "Digital marketing" (Y1) occupies the fifth position, with a value of 10.9638. These rankings indicate that both variables are considered as effects, implying that they are reliant on other influential factors.

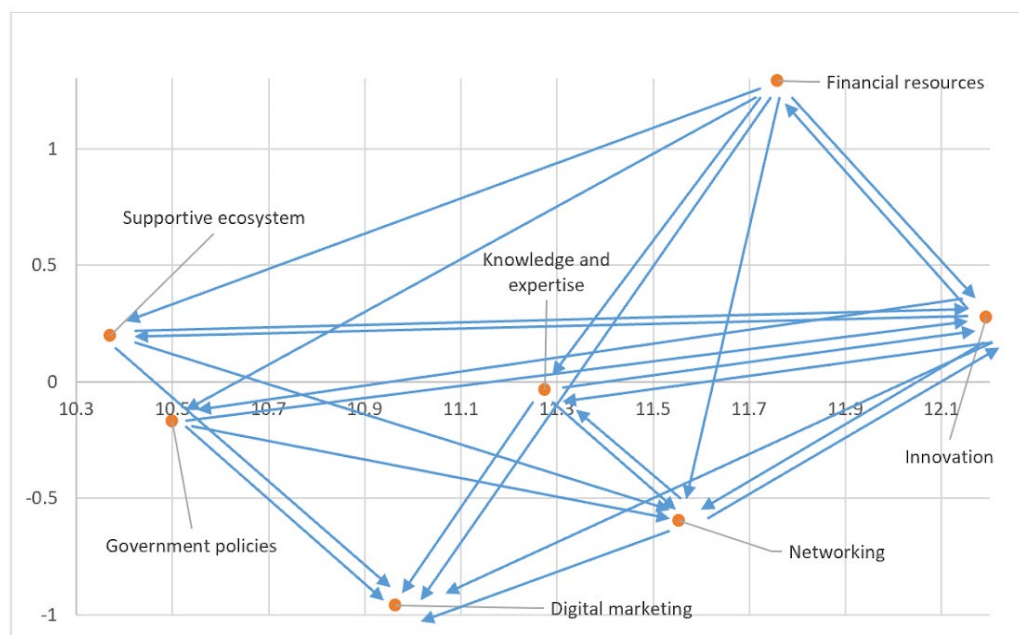


Figure 2. The network diagrams

The network diagram as shown in Figure 2, elucidates the interconnections among the factors influencing the growth of businesses in the realm of digital social innovation among young entrepreneurs. Within the scope of our analysis, it becomes evident that the factors of "Financial resources" and "Innovation" assume prominent roles as the principal catalysts, exerting causal effects on all other factors within the system. The variable "digital marketing" exhibits no discernible impact on other variables. In contrast, the influence of "Government policies" and "Knowledge and expertise" is noteworthy, as they both contribute to the development of "Innovation," "Networking," and the establishment of a "Supportive ecosystem." The significance of "Financial resources" is widely recognized as a crucial factor that impacts the achievements of enterprises involved in digital social innovation. This encompasses various aspects such as the efficacy of government policies, knowledge and expertise, innovation, networking, and the supportive ecosystem. The concept of "innovation" emerges as a prominent catalyst, exerting influence on various other factors, thereby signifying its profound implications for the expansion of businesses in the realm of digital social innovation. Moreover, the concept of "Networking" demonstrates a causal impact on various aspects, including "Government policies," "Knowledge and expertise," "Financial resources," and the "Supportive ecosystem." Finally, the "Supportive ecosystem" is shaped by various factors such as "Government policies," "Financial resources," "Innovation," and "Networking."

4. Theoretical and Managerial Implications

The present research enhances the extant body of knowledge on digital social innovation and entrepreneurship by employing the DEMATEL methodology to pinpoint the principal catalysts for enterprise expansion. This research offers significant contributions by shedding light on the factors that enable the achievement of young entrepreneurs in the realm of digital social innovation. The study's results may serve as a reference for scholars and researchers to pursue additional investigations on the identified catalysts and their influence on enterprise expansion. Furthermore, the research emphasizes the significance of establishing a conducive environment for budding entrepreneurs to cultivate creativity and augment commercial growth.

The study's results hold noteworthy managerial implications for both youthful entrepreneurs and policymakers. The research emphasizes the significance of possessing specialized knowledge and expertise in the relevant business field, building a strong network of professional connections, and having access to financial capital. The results of this study can be utilized by policymakers to formulate advantageous policies that encourage the investment in startup companies, promote the development of innovation hubs and incubators, and facilitate the integration of emerging technologies. The outcomes of the study can be utilized by youthful businesspersons to recognise domains that require enhancement in their commercial activities and to formulate efficacious approaches for the expansion of their enterprise. In general, the research offers significant perspectives for policymakers and emerging entrepreneurs to cultivate an enduring and socially accountable economy.

5. Conclusion, Limitations of Study and Future Research

This study has yielded valuable insights into the primary factors that contribute to the expansion of businesses in the realm of digital social innovation, particularly among young entrepreneurs. As a result, it can be concluded that the findings of this research shed light on the key drivers of growth in this field. The study employed the DEMATEL technique to examine the interconnectedness among the drivers and to pinpoint the most pivotal factors that impact the expansion of enterprises. The results suggest that the primary catalysts for business expansion in digital social innovation among youthful entrepreneurs are innovation, financial resources, and supportive ecosystems. Notwithstanding, this investigation is subject to certain constraints, such as the limited number of participants and the potential for partiality arising from the varying viewpoints of the specialists. Subsequent investigations ought to tackle these constraints by executing an extensive inquiry with a broader range of participants and employing various approaches to corroborate the findings. Furthermore, it is suggested that forthcoming studies delve into the precise methodologies and approaches that young entrepreneurs may employ to capitalize on these fundamental catalysts for business expansion within the realm of digital social innovation. The study's results hold significant implications for individuals invested in fostering digital social innovation among young entrepreneurs, including policymakers and entrepreneurs themselves. Policymakers can foster an environment that promotes the expansion of digital social innovation among young entrepreneurs by prioritizing innovation, allocating financial resources, and establishing supportive ecosystems.

Acknowledgments

This work is supported by ARI - KUPTM Grant “Modelling Business Growth In Digital Social Innovation For Young entrepreneurs” 100-tncpi/pri 16/6/2 (046/2022)

References

- Adomako, S., & Ahsan, M. (2022). Entrepreneurial passion and SMEs' performance: Moderating effects of financial resource availability and resource flexibility. *Journal of Business Research*, 144(February), 122–135. <https://doi.org/10.1016/j.jbusres.2022.02.002>
- Amouri, A., Festa, G., Shams, S. M. R., Sakka, G., & Rossi, M. (2021). Technological propensity, financial constraints, and entrepreneurial limits in young entrepreneurs' social business enterprises: The tunisian experience. *Technological Forecasting and Social Change*, 173, 121126. <https://doi.org/10.1016/j.techfore.2021.121126>
- Andrade, R., Pinheiro, P., Carvalho, L., & Rocha, R. (2022). Building a Bridge: Knowledge Sharing Flows into Entrepreneurial Ecosystems. *Journal of Open Innovation: Technology, Market, and Complexity*, 8(3), 144. <https://doi.org/10.3390/joitmc8030144>
- Bijedić, T., Schröder, C., Werner, A., & Chen, X. (2023). How do working conditions, network relationships, and institutional support offers effect entrepreneurial intentions of German university scientists? *Technovation*, 123, 102715. <https://doi.org/10.1016/j.technovation.2023.102715>
- Catala, B., Savall, T., & Chaves-Avila, R. (2023). From entrepreneurial and innovation ecosystems to the social economy ecosystem. *Journal of Business Research*, 163, 113932. <https://doi.org/10.1016/j.jbusres.2023.113932>

- Chapus, Q., & Nordman, C. J. (2021). You're all I need to get by? Analyzing young entrepreneurs' networks in Morocco from a "quantified narratives" method. *Social Networks*, 66, 211-223. <https://doi.org/10.1016/j.socnet.2021.03.004>
- Cuntz, A., & Peuckert, J. (2023). From hackers to start-ups: Innovation commons and local entrepreneurial activity. *Research Policy*, 52(2), 104675. <https://doi.org/10.1016/j.respol.2022.104675>
- Edelman, L. F., Manolova, T., Shirokova, G., & Tsukanova, T. (2016). The impact of family support on young entrepreneurs' start-up activities. *Journal of Business Venturing*, 31(4), 428-448. <https://doi.org/10.1016/j.jbusvent.2016.04.003>
- Glinka, B., Glińska-Neweś, A., & Zakrzewska-Bielawska, A. (2023). A resource interaction perspective on resource use and development in migrant entrepreneur networks. *Journal of Business Research*, 159, 113740. <https://doi.org/10.1016/j.jbusres.2023.113740>
- Gómez, G. M., Many, V., & Fransen, J. (2023). Vital entrepreneurial ecosystems: The case of ICT in Yaba, Nigeria. *Cities*, 137, 104289. <https://doi.org/10.1016/j.cities.2023.104289>
- Hewa Wellalage, N., Hunjra, A. I., Manita, R., & Locke, S. M. (2021). Information communication technology and financial inclusion of innovative entrepreneurs. *Technological Forecasting and Social Change*, 163, 120416. <https://doi.org/10.1016/j.techfore.2020.120416>
- Ismail, J. N., Al-sharqi, F., & Al-quran, A. (2023). Algebraic Operations on Pythagorean neutrosophic sets (PNS): Extending Applicability and Decision-Making Capabilities. *International Journal of Neutrosophic Science*, 21(4), 127-134. <https://doi.org/10.54216/ijns.210412>
- Ismail, J. N., Rodzi, Z., Al-sharqi, F., Hashim, H., Sulaiman, N. H., Cawangan, U., Sembilan, N., Seremban, K., Sembilan, N., Kelantan, U. C., Machang, K., Selangor, U. C., & Dengkil, K. (2023). The Integrated Novel Framework: Linguistic Variables in Pythagorean Neutrosophic Set with DEMATEL for Enhanced Decision Support. *International Journal of Neutrosophic Science*, 21(2), 129-141. <https://doi.org/10.54216/ijns.210212>
- Masrianto, A., Hartoyo, H., Hubeis, A. V. S., & Hasanah, N. (2022). Digital Marketing Utilization Index for Evaluating and Improving Company Digital Marketing Capability. *Journal of Open Innovation: Technology, Market, and Complexity*, 8(3), 153. <https://doi.org/10.3390/joitmc8030153>
- Nudurupati, S. S., Budhwar, P., Pappu, R. P., Chowdhury, S., Kondala, M., Chakraborty, A., & Ghosh, S. K. (2022). Transforming sustainability of Indian small and medium-sized enterprises through circular economy adoption. *Journal of Business Research*, 149, 250-269. <https://doi.org/10.1016/j.jbusres.2022.05.036>
- Polas, M. R. H., Kabir, A. I., Jahanshahi, A. A., Sohel-Uz-Zaman, A. S. M., Karim, R., & Tabash, M. I. (2023). Rural entrepreneurs behaviors towards green innovation: Empirical evidence from Bangladesh. *Journal of Open Innovation: Technology, Market, and Complexity*, 9(1), 100020. <https://doi.org/10.1016/j.joitmc.2023.100020>
- Qian, J., Lin, P. M. C., Law, R., & Li, X. (2022). Lack of IT and digital marketing professionals in hospitality: is it education's fault? *Heliyon*, 8(12), e12002. <https://doi.org/10.1016/j.heliyon.2022.e12002>
- Razmjoo, A., Mirjalili, S., Alihyaei, M., Østergaard, P. A., Ahmadi, A., & Majidi Nezhad, M. (2022). Development of smart energy systems for communities: technologies, policies and applications. *Energy*, 248, 123540. <https://doi.org/10.1016/j.energy.2022.123540>
- Rizvanović, B., Zutshi, A., Grilo, A., & Nodehi, T. (2023). Linking the potentials of extended digital marketing impact and start-up growth: Developing a macro-dynamic framework of start-up growth drivers supported by digital marketing. *Technological Forecasting and Social Change*, 186, 122128. <https://doi.org/10.1016/j.techfore.2022.122128>
- Rodzi, Z. b. M., Amin, F. A. M., Al-Sharqi, F., Jamiatun, N., Hasnan, Q. H., Zaharudin, Z. A., & Khair, M. H. M. (2023). Integrated Single-Valued Neutrosophic Normalized Weighted Bonferroni Mean (SVNNWBM)-DEMATEL for Analyzing the Key Barriers to Halal Certification Adoption in Malaysia. *International Journal of Neutrosophic Science*, 21(3), 106-114. <https://doi.org/10.54216/IJNS.210310>

- Rodzi, Z. M., Hazri, A. N., Azri, N. A. S. M., Rhmdan, N. D. F. S., Zaharudin, Z. A., & Uttunggadewa, S. (2023). Uncovering Obstacles to Household Waste Recycling in Seremban, Malaysia through Decision-Making Trial and Evaluation Laboratory (DEMATEL) Analysis. *Science and Technology Indonesia*, 8(3), 422-428. <https://doi.org/10.26554/sti.2023.8.3.422-428>
- Roundy, P. T., & Burke-Smalley, L. (2022). Leveraging entrepreneurial ecosystems as human resource systems: A theory of meta-organizational human resource management. *Human Resource Management Review*, 32(4), 100863. <https://doi.org/10.1016/j.hrmr.2021.100863>
- Setkute, J., & Dibb, S. (2022). "Old boys' club": Barriers to digital marketing in small B2B firms. *Industrial Marketing Management*, 102, 266-279. <https://doi.org/10.1016/j.indmarman.2022.01.022>
- Shaw, K., & Sørensen, A. (2022). Coming of age: Watching young entrepreneurs become successful. *Labour Economics*, 77, 102033. <https://doi.org/10.1016/j.labeco.2021.102033>
- Simatupang, T. M., & Widjaja, F. B. (2012). Benchmarking of Innovation Capability in the Digital Industry. *Procedia - Social and Behavioral Sciences*, 65, 948-954. <https://doi.org/10.1016/j.sbspro.2012.11.225>
- Tiba, S., van Rijnsoever, F. J., & Hekkert, M. P. (2021). Sustainability startups and where to find them: Investigating the share of sustainability startups across entrepreneurial ecosystems and the causal drivers of differences. *Journal of Cleaner Production*, 306, 127054. <https://doi.org/10.1016/j.jclepro.2021.127054>
- Williams, C., Tesfaye Hailemariam, A., & Allard, G. (2022). Exploring entrepreneurial innovation in Ethiopia. *Research Policy*, 51(10), 104599. <https://doi.org/10.1016/j.respol.2022.104599>
- Zhao, X., Xu, Y., Vasa, L., & Shahzad, U. (2023). Entrepreneurial ecosystem and urban innovation: Contextual findings in the lens of sustainable development from China. *Technological Forecasting and Social Change*, 191, 122526. <https://doi.org/10.1016/j.techfore.2023.122526>



and Behavioural Sciences

Search in this book series

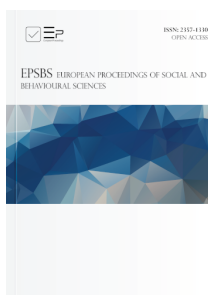


Looking for an author or a specific book?

Use advanced search

Home
> Book Series
> EpSBS

Font size A A A A



About EpSBS

ISSN: 2357-1330 (online)

European Proceedings of Social and Behavioural Sciences (EpSBS) is an open access, peer-reviewed and refereed series. The main objective of the EpSBS is to provide a platform for international scholars to disseminate their work.

The mission of the EpSBS is to promote interdisciplinary studies in social and behavioural sciences and become the world's leading series for work covering social and behavioural sciences. Topics include but are not limited to anthropology, archaeology, psychology, sociology, philosophy, interdisciplinary humanities, economics, political science and additional entries in related fields, including education, legal studies, environmental studies and media studies. The series also welcomes works highlighting the connection between human activities and social interactions.

The EpSBS publishes theoretical, experimental or application-based works with the objective of contributing to a greater understanding and development of social and behavioural sciences. EpSBS publishes either monographs for example, master thesis/doctoral dissertations or edited volumes based on the outcomes of conferences.

Once published, all proceedings are submitted for evaluation and possible coverage in **Web of Science Core Collection™ Conference Proceedings Citation Index - Social Sciences & Humanities (CPCI-SSH)** and Google Scholar.

Due to the high volume of submissions, Clarivate prioritizes evaluation of those volumes of highest interest to the global Web of Science user community. Those volumes that are evaluated and pass all **Clarivate Selection Criteria** will be selected for WoS-CPCI coverage.

Please take note that as Clarivate has its own policies as to the duration for acceptance, processing, and indexing new content, European Proceedings cannot guarantee acceptance or a specific time frame for the indexing process to be completed.

For further enquiries, please contact us at admissions@EuropeanProceedings.com

- > About EpSBS
- > Abstracting and Indexing
- > Aims and Scope
- > Archiving
- > Author Guidelines
- > Organisers/Volume Editor Guidelines
- > Originality and Plagiarism
- > Policies
- > Series Editors
- > Series Titles

Book and conference Proceedings Titles

Latest Books

Upcoming Books



We care about your privacy

We use cookies or similar technologies to access personal data, including page visits and your IP address. We use this information about you, your devices and your online interactions with us to provide, analyse and improve our services. This may include personalising content or advertising for you. You can find out more in our privacy policy.

Manage My Preferences

You have control over your personal data. For more detailed information about your personal data, please see our Privacy Policy and Cookie Policy.

☒ Strictly Necessary Cookies

These cookies are essential in order to enable you to move around the site and use its features, such as accessing secure areas of the site. Without these cookies, services you have asked for cannot be provided.

☐ Marketing Cookies

Third-party advertising and social media cookies are used to

- (1) deliver advertisements more relevant to you and your interests;
- (2) limit the number of times you see an advertisement;
- (3) help measure the effectiveness of the advertising campaign; and
- (4) understand people's behavior after they view an advertisement.

They remember that you have visited a site and quite often they will be linked to site functionality provided by the other organization. This may impact the content and messages you see on other websites you visit.

Accept all

Accept selected

Ruzita Azmi , Nik Adzrieman Abdul Rahman , Zurina Adnan ,
Norshafizah Hanafi , Rory Truell 

Series: European Proceedings of Social and Behavioural Sciences 

Volume: 132

Pages: 1 - 816

Publisher: European Publisher

Published: 29 November 2023